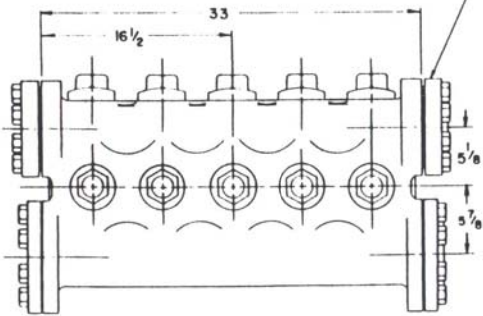
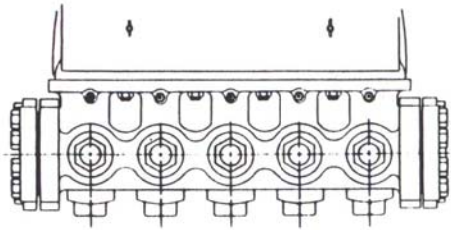
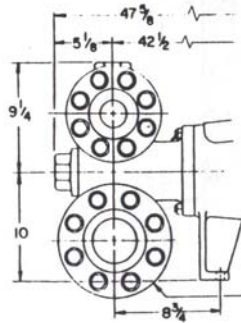


NOTE:
 FOR INSTALLATION PURPOSES -
 TOLERANCES FOR ALL DIMENSIONS
 (UNLESS OTHERWISE NOTED) ARE
 $\pm 1/8"$ ($\pm 3.2\text{mm}$).



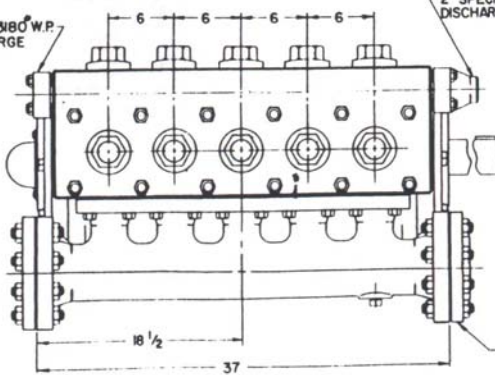
CAST ALUMINUM BRONZE OR DUCTILE IRON
 FLUID CYLINDER

2" ANSI 1500 DISCHARGE FLANGES
 CUSTOMER TO SPECIFY TYPE DESIRED



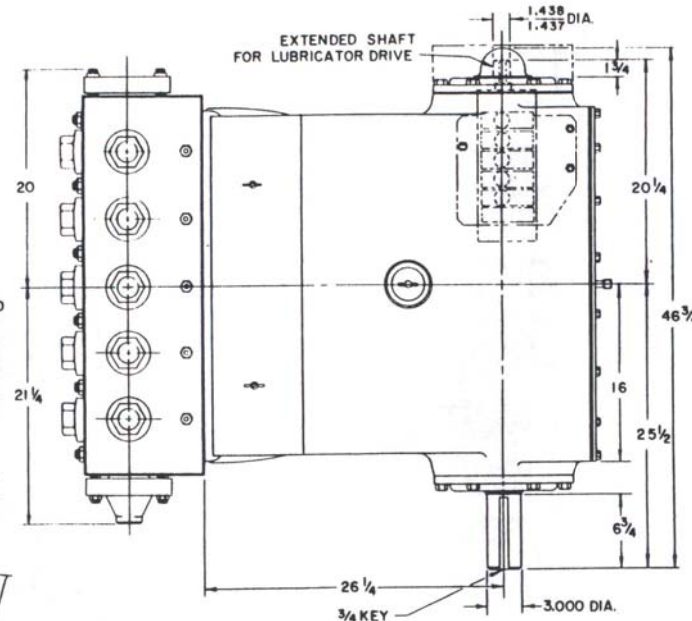
4" ANSI 300 SUCTION FLANGES
 CUSTOMER TO SPECIFY TYPE DESIRED

2" SPECIAL 3160 W.P.
 BLIND DISCHARGE
 FLANGE



2" SPECIAL 3160 W.P.
 DISCHARGE FLANGE

4" ANSI 300 SUCTION FLANGES
 CUSTOMER TO SPECIFY TYPE DESIRED
 (RAISED FACE SLIP-ON TYPE STANDARD)



GENERAL DIMENSIONS
 FOR
 HP-165M 1 5/8-2 1/2 x 4 1/2
QUINTUPLEX PLUNGER PUMP

NOTE:
 LEFT HAND DRIVE SHOWN -
 FOR RIGHT HAND DRIVE MOVE
 SHAFT & DIMENSIONS TO THE
 OPPOSITE SIDE SHOWN.

